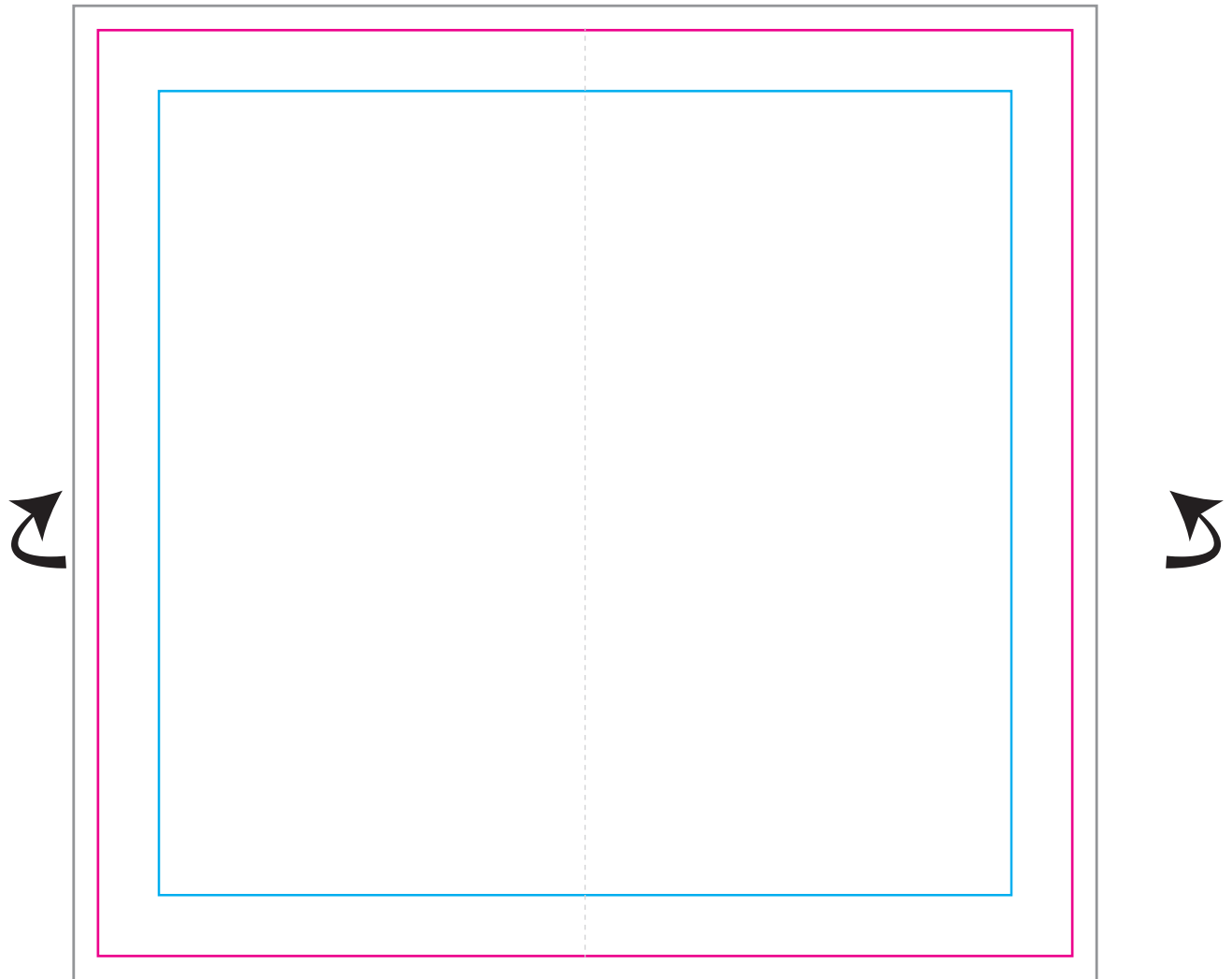


☐ Proof Approved: ☐ Proof Not Approved: ☐ Changes Required:

Feedback/Instructions: _____

ARTWORK APPROVAL SHEET



BLEED AREA - 21"W x 20"H
NOT VISIBLE WHEN DISPLAYED

Dotted line represents the seam line when
left and right are stitched together

FINISHED AREA - 20"W x 19"H
VISIBLE WHEN DISPLAYED

SAFE AREA - 17.5"W x 16.5"H
KEEP IMPORTANT TEXT/LOGO WITHIN THIS AREA



Imprint Size: _____ Imprint Location: _____ Imprint Color: _____

Product Code: SU546-3 Product Color: _____ Quantity: _____

Due to the technical aspects of Screen Printing, Embroidery, Sublimation, Heat Transfer & Laser Engraving Processes, we will do our best to match your requested imprint colour and fine art details as close as possible, but cannot guarantee a 100% perfect match. The visibility and clarity of very small text/graphic elements cannot be guaranteed due to the nature of the product's textured surface and under the normal limitations of decoration. If client submitted DST/EMB files are being used, we will not be able to guarantee the embroidery results. For Full Bleed Sublimation orders there may be a small percentage of print imperfections.

First proof is at no charge. Additional proofs will be at a cost of \$12.50 (g). If artwork needs to be touched up, reconstructed, or manipulated in any way, artwork charges will apply at \$50 (g) per hour. Minimum 1 hour. These charges will be acknowledged before proceeding with the order.