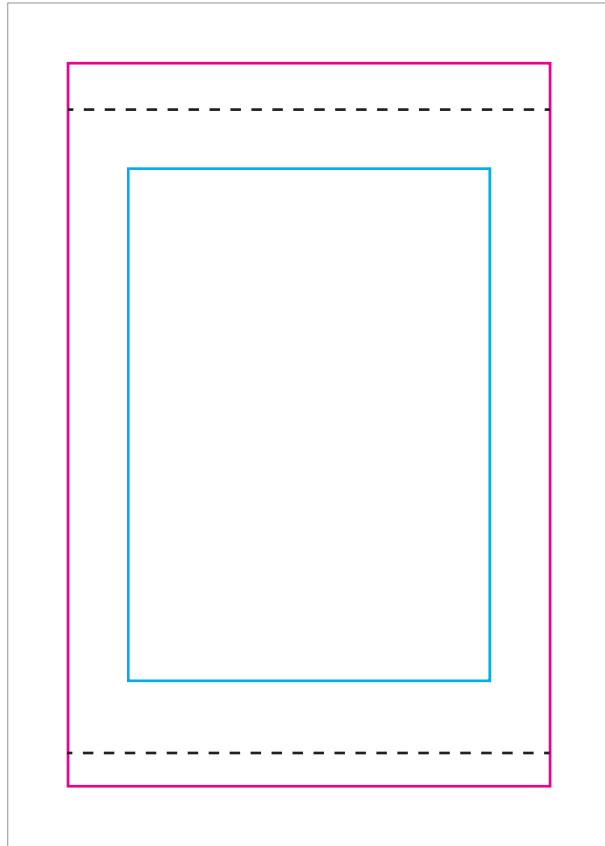


☐ Proof Approved: ☐ Proof Not Approved: ☐ Changes Required:

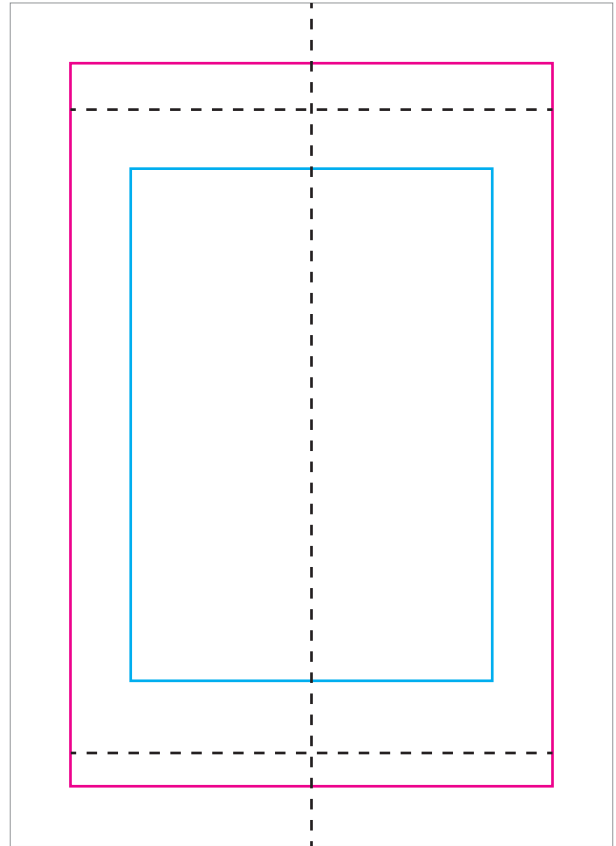
Feedback/Instructions: _____

ARTWORK APPROVAL SHEET

FRONT



BACK



Hem Line

Hem Line

Seam Line

BLEED AREA - 10"W x 14"H
NOT VISIBLE WHEN DISPLAYED

FINISHED AREA - 8"W x 12"H
VISIBLE WHEN DISPLAYED

SAFE AREA - 6"W x 8.5"H
KEEP IMPORTANT TEXT/LOGO WITHIN THIS AREA

NOTE: Art/Design may not line up accurately on the 2 sides

Imprint Size: _____ Imprint Location: _____ Decoration: SUBLIMATION

Product Code: SU679 Product Color: _____ Quantity: _____

Due to the technical aspects of Screen Printing, Embroidery, Sublimation, Heat Transfer & Laser Engraving Processes, we will do our best to match your requested imprint colour and fine art details as close as possible, but cannot guarantee a 100% perfect match. The visibility and clarity of very small text/graphic elements cannot be guaranteed due to the nature of the product's textured surface and under the normal limitations of decoration. If client submitted DST/EMB files are being used, we will not be able to guarantee the embroidery results. For Full Bleed Sublimation orders there may be a small percentage of print imperfections.

First proof is at no charge. Additional proofs will be at a cost of \$12.50 (g). If artwork needs to be touched up, reconstructed, or manipulated in any way, artwork charges will apply at \$50 (g) per hour. Minimum 1 hour. These charges will be acknowledged before proceeding with the order.